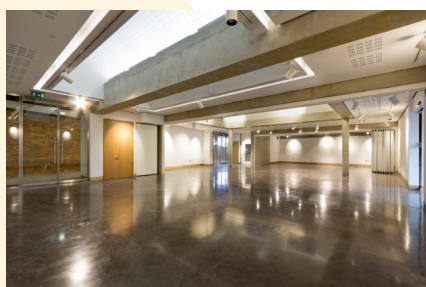


Soldiers of Oxfordshire Museum

Woodstock



Museum of Conflict and Oxfordshire History

This building was conceived as a museum to provide contemporary audiences an insight into how conflict has affected the people of Oxfordshire and provide an educational facility for the future. The architecture is deliberately robust to reflect the military origins of the project.

Behind a glass walled cloister facing the garden lies a range of flexible exhibition spaces that allow the museum to adapt to future change with the archive visible as part of the exhibition to show how the building operates behind the scenes. The building abuts a Grade II Listed wall with a passage gallery separating the main gallery spaces from the wall. The continuous passage and cloister allow a variety of routes through exhibitions and provide views both inside the building and back into the garden.

Details

- Contemporary building in historic garden
- Built to National Indemnity Standards
- Exposed concrete structure
- Joint venture development
- **Client:** Soldiers of Oxfordshire Trust
- **Value:** £2.35m
- **Contractor:** Feltham