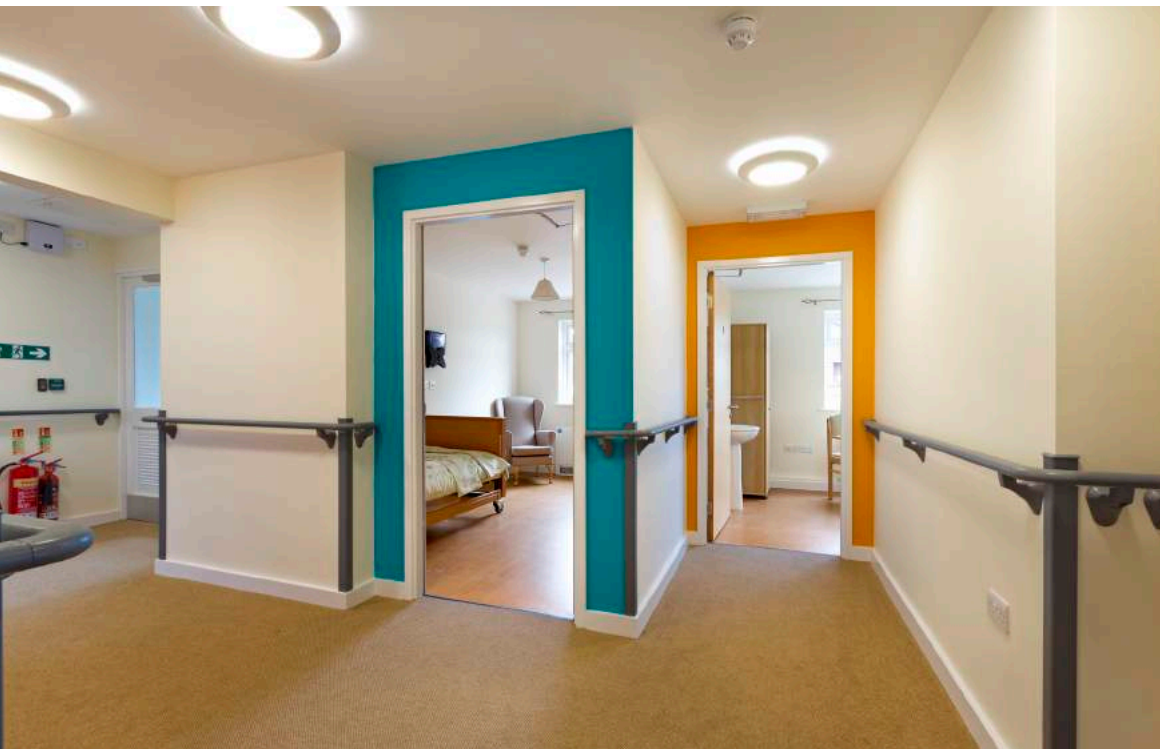


Specialist Dementia Care Unit

Walnut Close, Thatcham



Project Details

- **Scope**
11 bed dementia care home
- **Role**
Architect
- **Client**
West Berkshire Council
- **Contractor**
Swindon Commercial Services
- **Contract**
Traditional
- **Value**
£260k
- **Dates**
January - April 2013

Fast Track Dementia Care Conversion

Walnut Close Care Home in Thatcham is run by West Berkshire Council which provides residential care for all age-related conditions. In November 2012 the design team were given the task of transforming redundant offices and a day centre into a new 11 bedroom specialist dementia care unit and 5 months later the facility was opened in April 2013.

This fast track conversion saw the transformation of redundant offices and day centre into a new 11 bedroom specialist dementia care unit. The use of natural daylight and innovative use of colour outside each bedroom improves wayfinding within the unit. WC and Bathroom doors were assigned a separate colour to assist signage.



Key Aspects

- Inviting entrance with clear circulation route
- Wide corridors
- Natural daylight
- Each bedroom is personalised with its own colour to improve way finding
- Unit is divided into distinct zones, separating the bedroom wing from the day space



www.oxford-architects.com