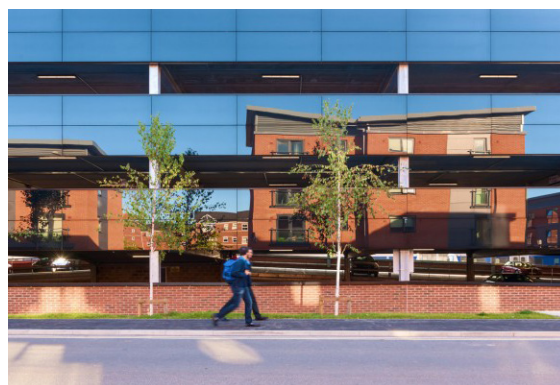


Banbury Station

Muti Storey car park



Town Centre Multi Storey Car Park

The car park provides 707 new spaces in a ramped deck configuration, on a former yard adjacent to the railway tracks and station.

The car park was designed up to design and build tender stage by MacNaughton Ltd. Oxford Architects provided contractor proposals and construction status design focussing on the ticket hall, ticket office and staff facilities, the passenger footbridge over the railway tracks, the stair cores and the co-ordination of the cladding.

Oxford Architects were engaged by the specialist car park designer Hill Cannon Engineers. The project was subject to Network Rail Forms 1, 2, 3 etc, consent process and Category 3 checking.

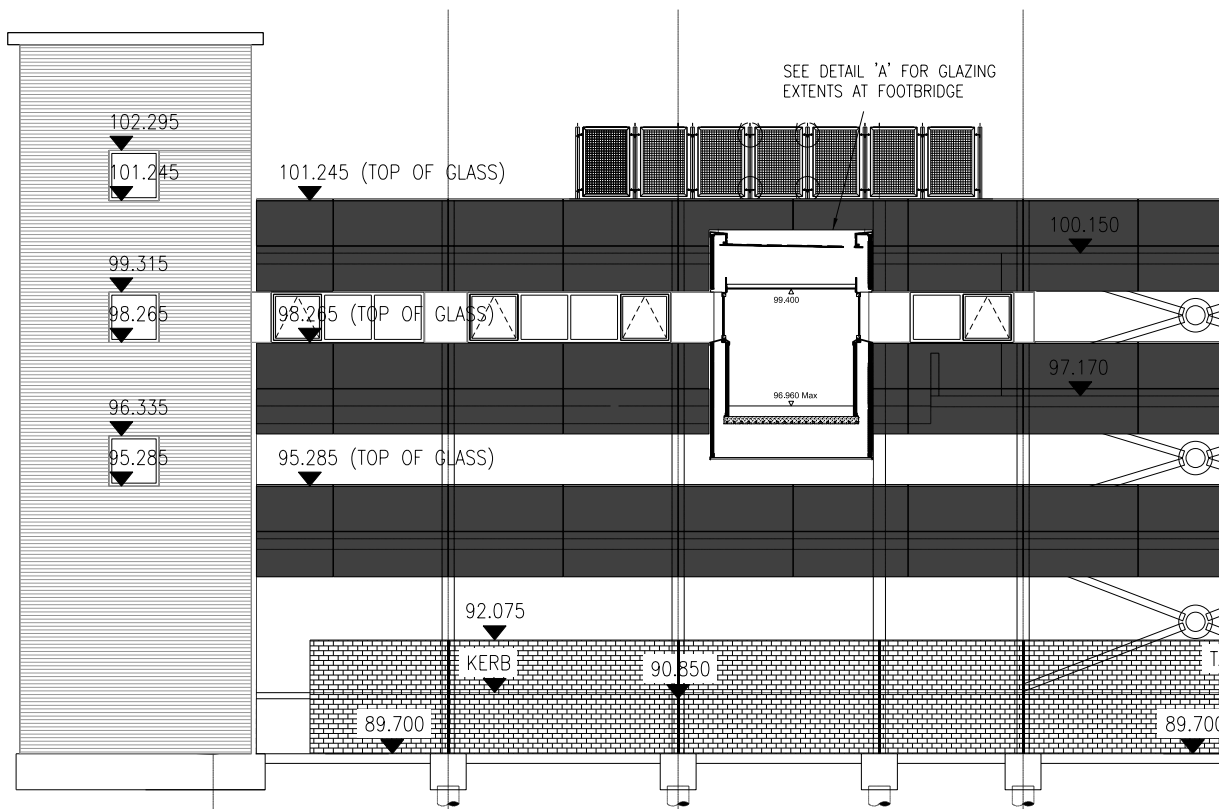
Project Details

- **Scope**
New 707 space multi storey car park, ticket hall & staff facilities
- **Role**
Executive Architect
- **Client**
Hill cannon/Osborne Construction for Chiltern Railways
- **Contractor**
Osborne Construction
- **Value**
£10m
- **Dates**
Completed July 2014



Key Aspects

- 707 space multi storey car park
- November 2013 to July 2014
- Full Network Rail consents process
- Ticket office, ticket hall and staff facilities accommodated within the car park structure
- Access for All works
- Construction work over running lines



www.oxford-architects.com

