

Church Lane, East Harptree

Somerset



Spacious Living

Oxford Architects were approached by Simon James Homes to develop a housing proposal suitable for a site on Church Lane, East Harptree.

Our brief asked for us to design five dwellings on the generous site. Four of the houses were to allow for large open plan living on the ground floors and four bedrooms on the first floor. Orientation, natural daylighting and views out were to be key design drivers. The fifth dwelling was to be slightly smaller in size and accommodate three bedrooms on the first floor. Provisions for car parking and large private gardens were also a priority.

The design intent for each dwelling has followed a clear concept, a timber 'spine' with render 'projections' to the front and rear elevations. Projecting windows add the final elevational 'accents' and articulation. The front render projection picks out the integrated garage and the cantilevered front entrance. The cantilever is the grand architectural feature, picking out the timber door and offering weather protection. The rear render projection houses the open plan living areas and the master bedroom. The window openings are larger in comparison to the timber spine, taking advantage of the expansive views and south westerly aspects.

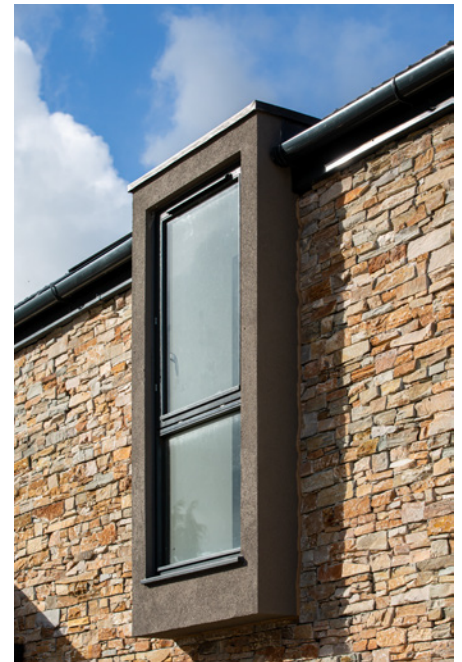
Project Details

- **Scope**
A mix of 3 & 4 bedroom houses on a generous site
- **Role**
Architect
- **Client**
Simon James Homes
- **Contract**
Design & Build
- **Contractor**
Simon James Homes
- **Value**
£1.2m
- **Dates**
April 2017 - October 2019



Key Aspects

- Utilises the site's orientation to maximise natural daylight penetration
- Contemporary countryside aesthetic
- Projecting feature windows
- Use of locally appropriate stonework and light render in a semi-rural setting



www.oxford-architects.com