

Healthcare Profile



Enhancing the
Healing Environment

1.

Healthcare Knowledge & Experience

With over 30 years of continuous engagement within the Health Sector, Oxford Architects have a track record of delivering a wide range of projects meeting the needs of complex briefs with innovative solutions to create healing environments.

We have a range of healthcare projects which span across both the Acute and Mental Health Sector, including special situations which have elements of both mental and physical healthcare such as dementia and brain injury. For further information on Mental Health, please refer to our Residential & Specialist Care Brochure.

Whatever the form of care given we understand that the design of the environment is critical to reducing stress, preparing the patient for treatment and achieving the best outcomes for the service provider. Each healthcare project has unique technical challenges that have to be met to allow staff to work effectively. We aim to give staff a working environment that not only meets these technical needs but also shows that they are valued and engaged, ensuring staff retention.

Oxford Architects believe in using a collaborative approach, by bringing all disciplines and stakeholders together, which is fundamental to a project's success.



Accident & Emergency

A&E Paediatric Department

The reconfiguration and decant programme for the Paediatric A&E department at Hillingdon Hospital provided additional treatment space and greater separation of Paediatric patients.

Positive enhancements of the patient environment such as separate cubicles, artwork and daylight were co-ordinated with technical requirements bedhead services, a new resus room and improved infection control.

Positive feedback from the Client:

“the treatment cubicles are now separate rooms, so spacious, bright and with new equipment, making the rooms much more flexible”

“parents and kids find it a so much more peaceful, calm and comfortable environment”

“..a great place for nurses and doctors to work in.”



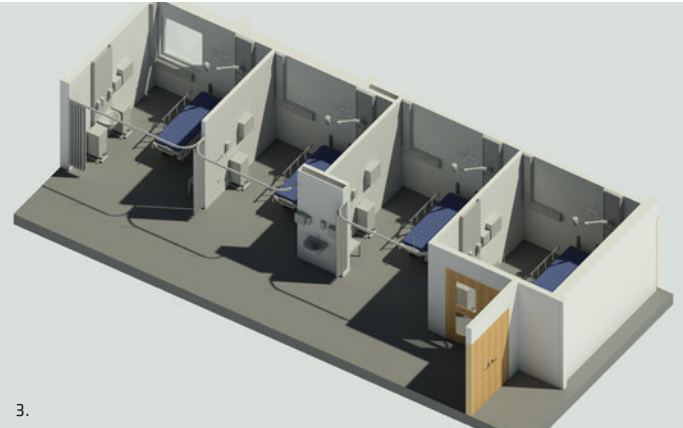
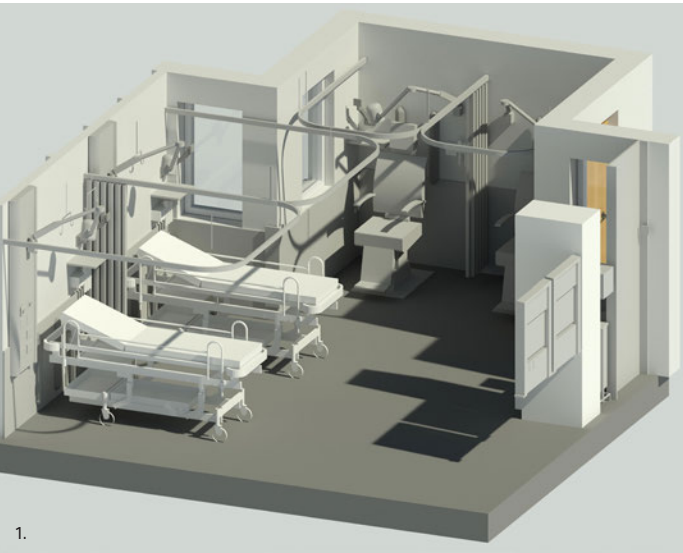
1. Ward, Paediatric A & E Hillingdon Hospital 2. Treatment Room, Paediatric A & E Hillingdon Hospital 3. Waiting Area, Paediatric A & E, Hillingdon Hospital 4. Reception, Paediatric A & E Hillingdon Hospital

Fast Track A&E Works

Working collaboratively with Beard Construction, this fast track Design and Build contract has introduced new Majors Bays whilst also separating the adults and paediatric space within the Horton General Hospital A&E department.

With a start in early September 2020 and a completion date of December 2020, Oxford Architects have worked collaboratively with the Client, the Clinical team, Main Contractor and Design Team. With weekly meeting we were able to keep open a busy A&E department, whilst resolving site queries and ensuring the project remained on programme.

Oxford Architects made full use of Revit and ADB software, to efficiently capture the brief and present design proposals in both 2d & 3d.



1. A & E Paediatric Bays, Horton General Hospital 2. A & E Majors Bays, Horton General Hospital 3. A & E Majors Bays, Horton General Hospital

Outpatients Accommodation

Ambulatory Care

The primary aim of ambulatory care is to reduce pressure on A&E by referring patients directly to this area of the hospital. A new shared space for Junior Doctors has been created for group briefing and individual workstations. Also, a new 6 chair treatment area with associated bedhead services.

We have also worked hard with the trust to refurbish and re-equip adjacent treatment rooms to provide an efficient clinic. Throughout the department new hand-wash basins, write-up and clean storage facilities have been provide so as to comply with current standards.

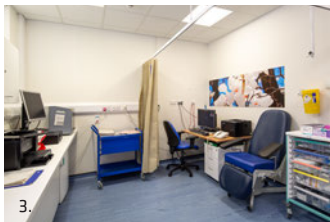
The introduction of artwork and profiled seating create a calm and restful environment.

Surgical Daycare

To help reduce winter pressures and provide essential separation of sexes, Oxford Architects delivered complex works in a live environment.

Located next to the theatres, the new day care provides a 5 bay trolley treatment area, a new reception area and providing enhanced circulation into surgery.

By co-ordinating weekend working and working closely with the hospital, we were able to also provide essential new access to the theatre corridor whilst the theatres continued to function throughout the process.



1. Ambulatory Care Department, Hillingdon Hospital 2. Clinical Decisions Unit, Hillingdon Hospital 3. Treatment Room, Ambulatory Care Department, Hillingdon Hospital 4. Junior Doctors, Hillingdon Hospital 5. Surgical Day Care Entrance Corridor, Hillingdon Hospital 6. Ambulatory Care Department, Hillingdon Hospital 7. Surgical Day Care Reception, Hillingdon Hospital 8. Hillingdon Hospital

Ward Accommodation

Oxford Architects have a track record of delivering ward accommodation across the Acute and Mental Health sectors. These projects present a great diversity of technical challenges which we meet with innovative design solutions that allow staff to give safe and effective care. We aim to exceed these requirements by providing a healing environment for the patient that reduces stress and helps them on their path to recovery by considering daylight, views, sleeping space, day space, dining and visitor interaction.

Oxford Architects have worked closely with Hillingdon Hospital since 2015 to upgrade and extend a number of their existing wards. We have acted as Design Architect and Client Advisor since 2019 for the new Seacole building (3-storey Modular Ward project) that enables the new site masterplan. Initially designed as 3 identical 28-Bed wards the upper floors were quickly adapted to meet the urgent clinical need in the spring of 2020 when the Covid-19 pandemic hit.

The Lower Ground Floor 28 Bed Ward provides 6no. 4-bed bays and 4 no. single bedrooms with en-suite providing end of life care.

The Ground Floor 16 Bed ICU provides 4no Single Isolation Rooms and 6no. 2-bed bays. Working closely with the bed head service supplier and the clinical team we incorporated a 2-bed bay within the existing envelope. We adapted the ventilation systems to give the Trust flexibility to cope with cohorts of infectious patients as the pandemic develops.

The 1st floor provides 26 Bed Respiratory Ward with 2 additional single bedrooms and one less multi-bed bay to give better separation of patients.



1. Hillingdon Hospital 2. Ward Nurse Station, St Luke's Hospital

3. ICU Ward, Seacole Building, Hillingdon Hospital 4. ICU Ward, Seacole Building, Hillingdon Hospital 5. Paediatric A & E Ward, Hillingdon Hospital 6. Bedroom, St Luke's Hospital, Oxford

Pharmacy

Robotic Dispensary

An under-used storage area on the lower ground floor level has been converted into a new out-patient pharmacy, integrating state of the art robotic pharmacy equipment.

An in-depth consultation process achieved the required safety standards and efficient workflows.

A purpose built reception area with acoustic baffles, accessible counter and adjacent cubicles now provides confidential consultation within a busy hospital.

New waiting area is now clear, safe, private and stress free facility for patients to pick up prescriptions.

“The new pharmacy is a significant improvement, with a modern waiting area and a state-of-the-art robot which makes the dispensing process safer.”

Chief Pharmacist at the Hillingdon Hospitals NHS Foundation Trust



1. Reception, Pharmacy, Hillingdon Hospital 2. Waiting Area, Pharmacy, Hillingdon Hospital 3. Robotic Dispensary, Pharmacy, Hillingdon Hospital

Cancer Care

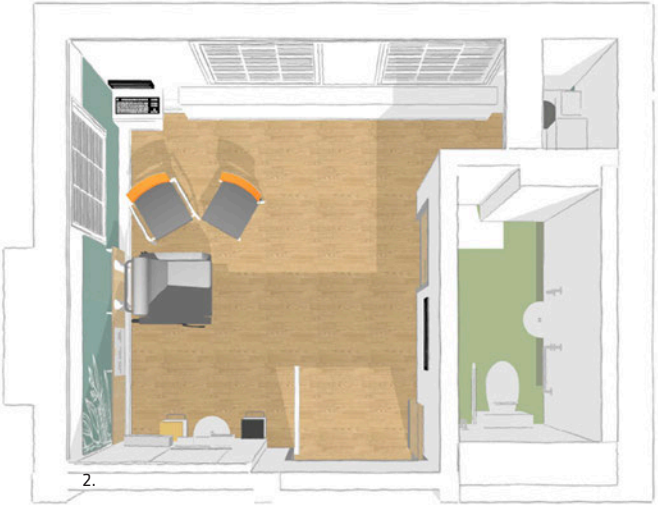
Chemotherapy

Oxford Architects have converted an existing clinical treatment room into a fully operational Private Patient's Chemotherapy Suite.

The Trust's preliminary layout were re-worked through stakeholder engagement meetings. The discussions we were able to enhance the Patient experience offering greater privacy and dignity while providing a relaxing and therapeutic environment.

The main treatment space has been enhanced with an innovative interior design concept, which incorporate both digitally printed artwork, finishes and furnishing which compliments one another. Housed within the original 1904 building.

The new suite also makes use of the high ceiling and Edwardian sash windows, creating an open atmosphere and natural light, with the addition of subtle concealed lighting, encourages a feeling of wellbeing.



1. Axonometric view, Chemotherapy, Mount Vernon Hospital 2. Aerial view, Chemotherapy, Mount Vernon Hospital 2. Chemotherapy, Mount Vernon Hospital

Specialist Residential Care

Michael Sobell House – Mount Vernon Hospital

A unique partnership of Michael Sobell Hospice, Harlington Hospice and Hillingdon CCG, has allowed the Michael Sobell Hospice building to be reopened on 6th January 2020.

Hundreds of local people descended on Michael Sobell Hospice, Mount Vernon Hospital, in December, to attend the grand re-opening of the Hospice Inpatient Unit (IPU) after the completion of a three-month refurbishment and redevelopment project.

The Hospice IPU, which closed due to health and safety issues 18 months ago, is now fully refurbished.

With clear budget constraints Oxford Architects worked closely with the 8build (main contractor) and Natalie Parkins Design (Interior Designer) to totally transform the building.

“This is the start of a new journey for Michael Sobell Hospice Charity and the new team of trustees, and we hope the community will re-engage and support our efforts in fundraising, to keep this vital service available for everyone who may need it.”

Michael Breen, Deputy Chairman – Michael Sobell Hospice Charity



1. Café Area, Michael Sobell House, Mount Vernon Hospital 2. 3-Bed Bay, Michael Sobell House, Mount Vernon Hospital
3. Café Area, Michael Sobell House, Mount Vernon Hospital 4. Day Room, Michael Sobell House, Mount Vernon Hospital

Maternity Bereavement

Working with Hillingdon Hospitals Charity, Oxford Architects have incorporated a standalone Maternity Bereavement Suite adjacent to the existing delivery suite. Set within the Hospital grounds the new extension will provide much needed off ward discrete accommodation for women and their families to cope with their loss in private.

Large areas of glazing in each of these rooms bring daylight in while views out are confined to the private gardens by vertical planting.

Overhanging roofs are used to give shelter to the external spaces so that it is possible for the families to use the private garden at any time. The delivery rooms are sized and equipped to meet the current NHS Guidance.

With both a delivery suite and lounge, looking out over courtyard gardens, it creates a private and peaceful setting away from the clinical wards.

The clinical feel of the space is softened with warm, natural colours and finishes and subtle, themed artwork patterns on feature walls.



1. Maternity Bereavement, Hillingdon Hospital, Concept Plan View 2. Maternity Bereavement, Hillingdon Hospital, Concept Delivery Suite View

Technical Capability

Current Capability & Training

All projects in Oxford Architects are currently operating within the BIM environment and delivering projects to a level that best suits the clients requirements for construction and post hand over. We are competent and experienced in delivering projects to ISO 19650 (BIM Level 2) standards with the ability to offer fully coordinated design and data enriched information via common data exchange platforms. We are actively working towards BSI ISO 19650 1-2 accreditation on the strength of our BIM experience on previous projects and the processes we have adopted.

We now aim to deliver all healthcare projects using Revit allowing us to comply with the processes and standards set out in ISO 19650, even if this is not required by the client or design team as we feel this offers the best design service for our clients. From the inception of the project within Revit we have the ability to draw on large amounts of embedded information from within the 3D model to aid the clients and contractor, as well as utilising additional external software that plugs directly into Revit such as ADB (Activity Data Base) which is designed to be HBN and HTM compliant to deliver 3D room layouts, room data sheets and component scheduling .

Our models use rich embedded data developed over the course of the project with other design team disciplines modelled information from M&E engineers, Structural Engineers, Landscape Architects and Civil Engineers we can use their models to link into our own architectural model allowing us to run active model/construction coordination as the design matures. We have the ability to deliver scheduled COBie information linking specific manufacturer and

maintenance attributes to objects and assemblies within the 3D model to the Level of Detail identified in the Employer’s Information Requirements (EIRs).

We have been operating an in-house BIM training programme since August 2013. Our third party BIM consultants ‘AIS’ have enhanced our embedded BIM and Revit knowledge with additional in-depth training sessions. We are actively developing and growing our in house digital design team to utilise computational design as part our design and delivery process.

CAD Software

Oxford Architects operate Autodesk Revit and Bentley AECOsim Building Designer, both supported by Bentley PowerDraft and Autodesk Autocad for 2D drafting. We use Solibri Model Checker software as a tool to review and run clash detection on federated BIM models. We also run ADB (Activity Data Base), Autodesk ‘Navisworks’ and Autodesk ‘Design Review’ as required by the client. We have experience using common data environments such as 4projects or A-site, as well as the ability to host and manage projects via SharePoint. Visualisations are exported to Lumion or Enscape for photorealistic renders, with additional Photoshop manipulation setting the models into context.

PAS 1192, EIR and BEP

We work to the latest standards set out in the UK BIM Framework ISO 19650 series of standards and our Digital Production manual, MPDT, TDIP, BEP and EIR documentation has been developed in accordance with these standards.

Accreditations



1. Wall Graphics, Paediatric A & E, Hillingdon Hospital



OXFORD ARCHITECTS



OXFORD

Bagley Croft
Hinksey Hill
Oxford
OX1 5BS
Tel: 01865 329 100

BRISTOL

The Workshop
254 Southmead Road
Bristol
BS10 5EN
Tel: 0117 958 1500

www.oxford-architects.com