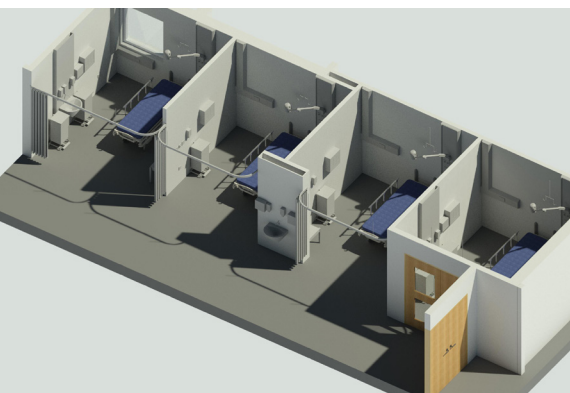
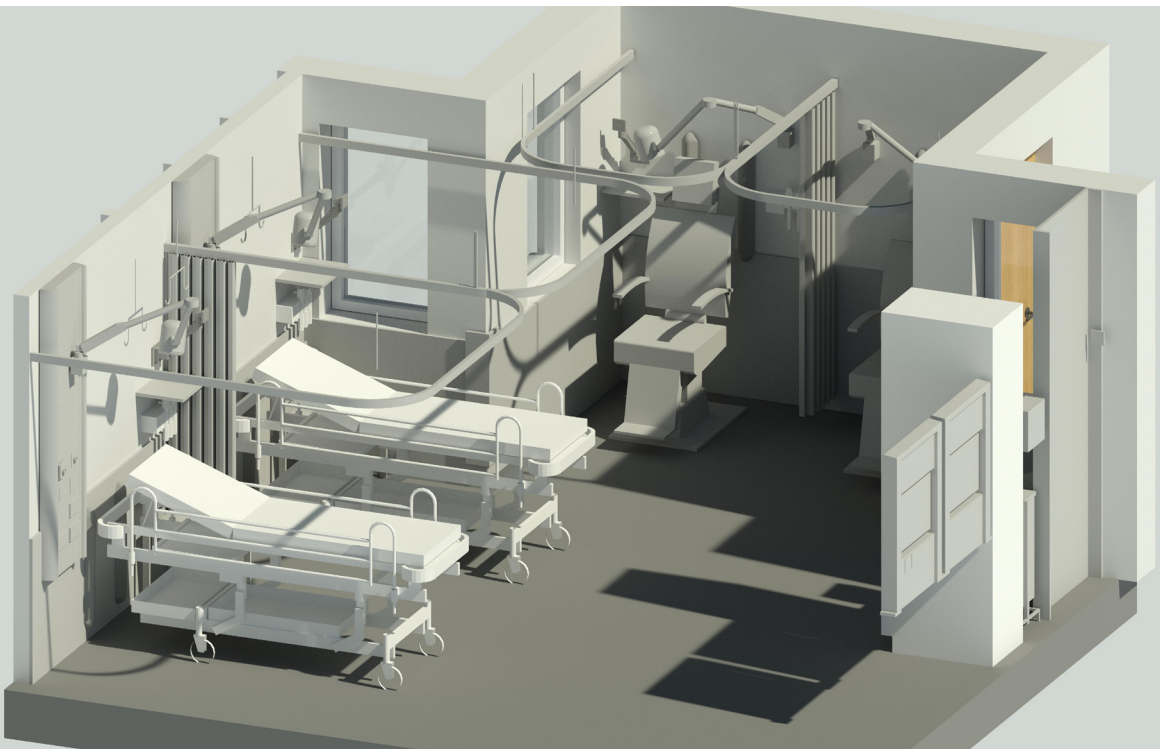


A&E Refurbishment

Horton General Hospital



Fast Track Project in Live A&E Department

Working collaboratively with Beard Construction, this fast track Design and Build contract has introduced new Majors Bays whilst also separating the adults and paediatric space within the Horton General Hospital A&E department.

Starting the design in September 2020 and a completion on site before Christmas 2020, Oxford Architects have worked collaboratively with the Client, the Clinical team, Main Contractor and Design Team. With weekly meetings we were able to keep open a busy A&E department, whilst resolving site queries and ensuring the project remained on programme.

Oxford Architects made full use of Revit and ADB software, to efficiently capture the brief and present design proposals in both 2d & 3d.

Project Details

- Scope**
 New Majors Bays and separation of Adult and Paediatric areas within Horton General Hospital A&E Department
- Role**
 Architect, Lead Designer, Principal Designer
- Client**
 Horton General Hospital
- Contractor**
 Beard Construction
- Contract**
 JCT D&B
- Value**
 £400k
- Dates**
 Sept 2020 - Dec 2020