

Dolphin Care

Kingfisher Court, North Baddesley



Project Details

- Scope**
 880sqm, 12 bed care home for adults 18-65 with acquired brain injury
- Role**
 Architect
- Client**
 Wimpole Land
- Contractor**
 GB Building Solutions
- Contract**
 JCT Design & Build
- Value**
 £1.29m
- Dates**
 Completed Dec 2012

Specialist Nursing Care in Hampshire

The 12-bed Care home in North Baddesley, will provide specialist nursing care for adults aged 18-65 with acquired brain injury and associated neurological conditions or complex cognitive impairments and/or physical disabilities.

This will include active rehabilitation, slow stream rehabilitation and long term placements. The Care will also provide long-term conditions services for adults aged 18-65 with acquired brain injury and associated neurological conditions or complex cognitive impairments and/or physical disabilities.

Set on the outskirts of the village, surrounded by fields and trees, the design of the building responds positively to the nature of its surroundings and offer high quality living accommodation and bespoke nursing care within an environment which will promote recovery and rehabilitation.

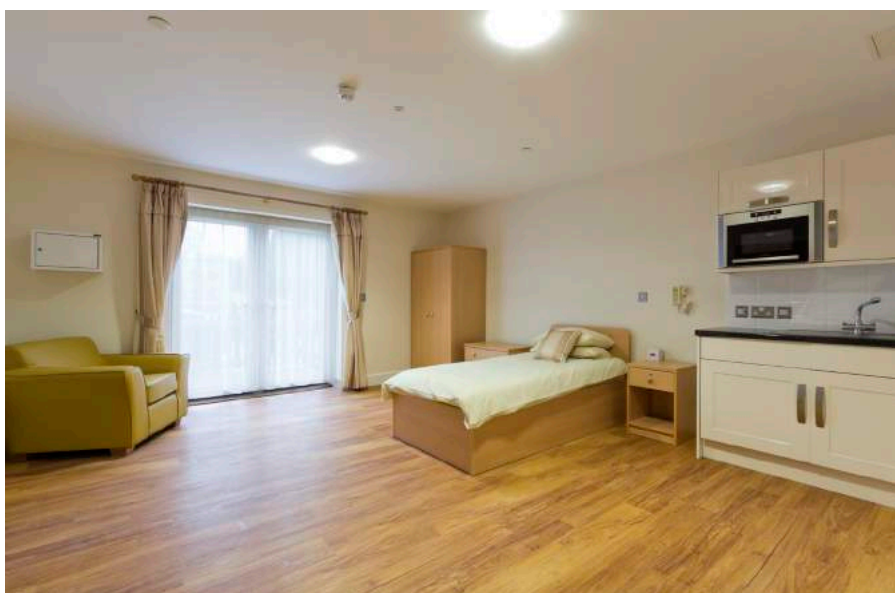


OXFORD ARCHITECTS



Key Aspects

- 12 Bedrooms with individual en-suite
- ADL kitchen for residents
- Full assisted bathing facilities
- Day spaces with views of the countryside
- Natural ventilation via central atrium
- Ground floor rooms have access to their own garden area



www.oxford-architects.com