

Building R1

Rutherford Appleton Laboratory, Oxfordshire

Industrial

Research & Development



Project Details

- **Scope**
5,700 sqm of internal refurbishment, complete re-roofing and re-cladding of the exterior
- **Role**
Architect, Lead Consultant
- **Client**
Rutherford Appleton Laboratory/STFC
- **Contractor**
D+B Façades (Cladding)
- **Contract**
GC Works
- **Value**
£9.6m in phases
- **Dates**
Phased Completion
2013 - 2016

Fresh Face for 60s Building

Building R1 was constructed in the 1960s and enlarged / extended throughout the 1970s and 1980s. The entire building was in need of refurbishment..

The internal and external refurbishment works had to be undertaken in a series of phases whilst the building was remained occupied, including on-going sensitive laser experiments in the ground floor laboratories.

Particular objectives of the project were the refurbishment of the deteriorating fabric, improving the aesthetic of the building to reflect the prestige of a leading international scientific institution and improve environmental performance all delivered with very limited decanting of staff.

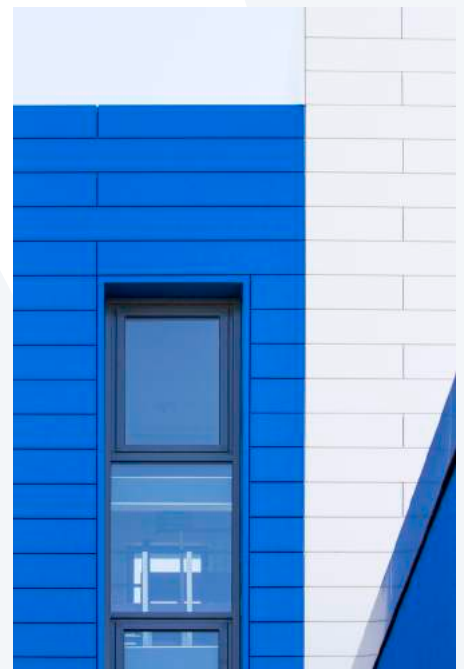
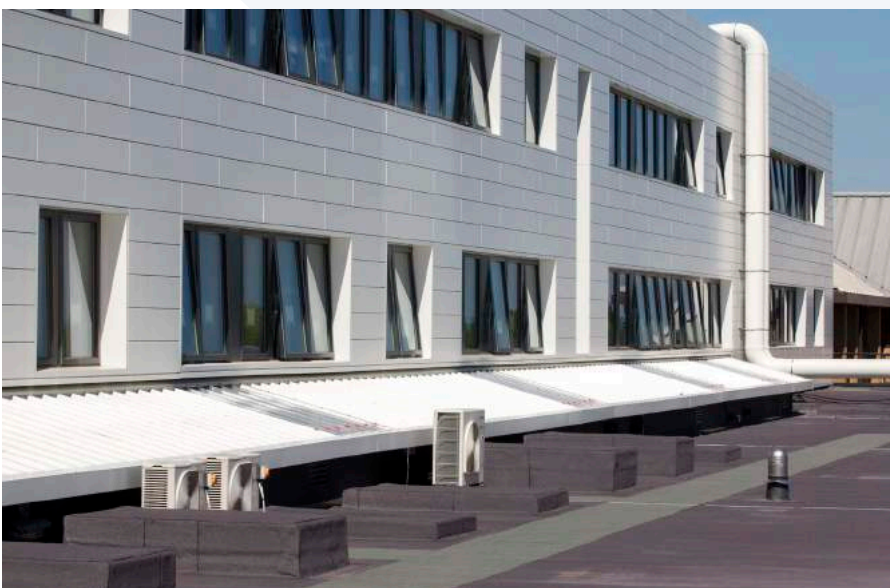


Key Aspects

- Refurbish deteriorating fabric
- Upgrade the image of the building as befits a leading international scientific institution
- Deal with asbestos in the building
- Achieve all of the objectives with only a limited decanting of staff
- Liaison with user groups to determine internal fit out requirements
- Increased energy efficiency and internal environmental comfort levels



Building before refurbishment



www.oxford-architects.com