



Residential & Specialist Care



Experience & Knowledge

At Oxford Architects we have a wealth of accumulated knowledge and a complete understanding of the key issues which occur in the design and delivery of residential and specialist care accommodation.

From specialised elderly residential units through to secure residential mental health accommodation, we have developed a reputation for innovative, exciting, cost effective and appropriate design solutions which respond positively to our clients' requirements and aspirations.

Originally formed in 1962, Oxford Architects has developed into a substantial architectural practice working across all the major construction sectors, especially within the residential care and healthcare sectors, where we seek to create appropriate therapeutic and sustainable environments through innovation and continuous improvement.

From our deep-rooted knowledge we are able to assist clients and service providers, seeking to achieve Care Quality Commission registration, through the maze of standards and 'best practice' guidance which applies to the different facilities within this broad range of care provision.

Within this broad sector we have proven expertise in:

- Care homes for close-care, extra-care and dementia care
- Care facilities for adults & elderly with learning disabilities
- Care facilities catering for dual diagnosis, including mental health & physical disabilities
- Secure residential care facilities, including those detained under the Mental Health Act or with forensic backgrounds
- Acquired brain injury units
- Assisted living accommodation for people with Young Onset Dementia
- Palliative care

Residential Care

Working with leading residential care home providers, we have designed and delivered bespoke facilities, from concept and detailed design to completion and registration.

We have particular experience in the re-ordering, refurbishment and extension of existing properties, including Listed Buildings, bringing tired and unsuitable premises up to current standards, often working to limited budgets and timescales.

We have knowledge and experience in all levels of care home provision including supported living, assisted living, close-care, extra-care and dementia care. Alongside this, we have provided care facilities for adults & older persons with learning disabilities, and for those with a range of physical disabilities.



1. St Luke's Hospital, Oxford 2. St Luke's Hospital, Oxford 3. Catsbrain Farm Care Village, Swindon 4. Camino Healthcare, Oxfordshire



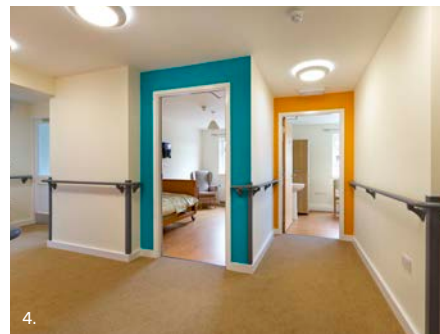
5. Fairfield Residential Care Home, Oxford 6. Fairfield Residential Care Home, Oxford 7. St Luke's Hospital, Oxford 8. Catsbrain Farm Care Village, Swindon

Dementia Care & Brain Injury

Working closely with Young Dementia UK Homes and using the University of Stirling Dementia Design Audit Tool, we have designed a new residential care model to allow people dealing with Young Onset Dementia to lead a normal life within a safe environment. A social hub will be incorporated in the village of Charlbury to create a meeting place and promote social interaction. 12 bespoke apartments will also be incorporated into the scheme giving residents the freedom to move through the building and enjoy views of nature and the countryside.

Working alongside Oxford University NHS Foundation Trust, we have delivered the Dignity Plus dementia upgrade within 6 hospitals across Oxfordshire. Works included the upgrading of existing wards to be compliant with Dementia Care Standards, improved way finding, lighting, introducing wall art, interior design, incorporating 'heal well rooms' and external sensory gardens.

In our commitment to provide a well-designed and appropriate environment for the building users and residents, we not only pay close attention to the National Minimum Standards and Department of Health guidance but we also seek to design buildings that meet or exceed the industry norms.



1. Young Dementia UK Homes, Charlbury, Oxfordshire 2. Kingfisher Court Phase 2, North Baddesley, Hampshire 3. Young Dementia UK Homes, Charlbury, Oxfordshire
4. Walnut Close, Thatcham, Berkshire

5. Kingfisher Court Phase 2, North Baddesley, Hampshire 6. BIBIC (British Institute for Brain Injured Children), Somerset 7. Walnut Close, Thatcham, Berkshire
8. Young Dementia UK Homes, Charlbury, Oxfordshire

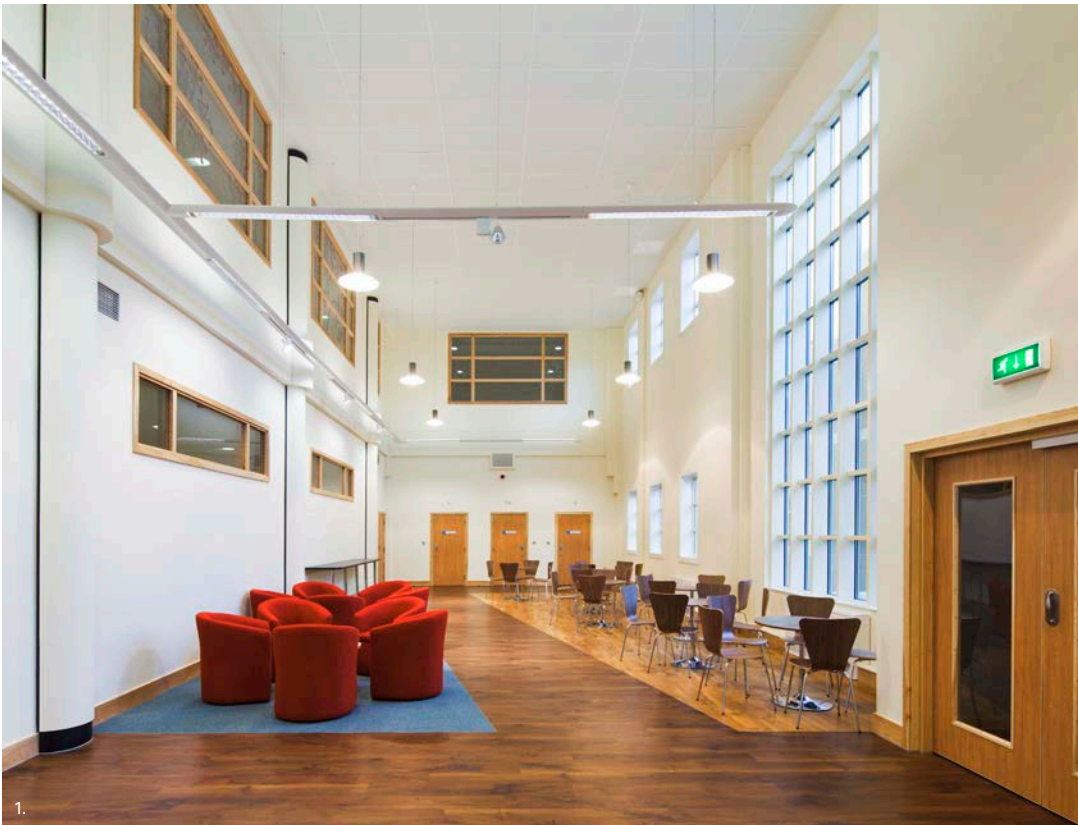
Locked, Low & Medium Secure Wards

Working in the independent and public sectors requires a thorough knowledge base of not only Department of Health NHS standards in the form of current and emerging HBNs and HTMs, but also keeping abreast of new research and quality initiatives promoted by organisations such as the Royal College of Psychiatrists. Alongside this guidance runs the National Minimum Standards, which are often open to interpretation by individual CQC Commissioners.

Oxford Architects has particular expertise in the design of secure mental health facilities, from locked wards and low secure through to medium and high security. We have a clear and complete understanding of the key issues of privacy, dignity and security for residents, staff and visitors. Our knowledge of the standards, key design considerations and technical solutions allows the provision of a non-institutional ligature-free therapeutic environment which is clearly demonstrated by the number and diversity of successfully completed commissions.

Within the last decade we have designed and delivered a 44-bed adolescent unit, a 45-bed womens unit, and a 132-bed mens unit. We have also fully refurbished and reconfigured a 56-bed low secure service, 12-bed low secure brain injury unit, a 10-bed PICU, a 13-bed low secure ward and 10-bed locked ward.

Our unrivalled knowledge of the key standards, best practice, spatial requirements, technical solutions and proprietary products allows us to deliver a well-designed and appropriate built solution.



Within secure environments we have provided facilities for a wide range of physical and cognitive conditions for mens, womens and adolescent services including:

Challenging behaviour	Substance misuse	Mother & baby	Forensics
Older adult functional	Inpatient services	Brain injury	CAMHS
Learning disabilities	Neuropsychiatry	Adult acute	Deaf
Personality disorder	Eating disorders	Community	PICU

1. PICU Unit, Oxford Health 2. St Andrew's Healthcare, Essex 3. Malcolm Arnold House, St Andrew's Healthcare, Northampton 4. LSU Littlemore, Oxford Health

1. William Wake House, St Andrew's Healthcare, Northampton 2. PICU Refurbishment & S136, Sussex Partnership NHS FT 3. Smyth House, St Andrew's Healthcare, Northampton

High Security Buildings

Oxford Architects is unique as one of the special few practices with significant experience of designing buildings within a high security setting.

As one of the foremost secure mental healthcare establishments, Broadmoor Hospital presents a unique number of challenges to architects. Working continuously for the West London Mental Health Trust since 1995, the Practice has been responsible for some 200 projects, virtually covering the hospital's entire building stock, and ranging from small scale refurbishments to major building developments. The most notable commission is the Broadmoor Hospital redevelopment. The main concept was always to rethink

the way we house high secure patients and ensure that the buildings and landscape improve the wellbeing for everyone using the Hospital.

The wards have been designed to radiate around a central parkland and central building. Each ward will have its own identity reflecting the patient group as well as access to their own courtyard garden. The lay of the land allows for the perimeter fence to be constructed lower than the wards giving patients direct views of the surrounding countryside.

Works are currently taking place on site with a projected completion in 2019.



1.



1.



3.



2.



4.

Accreditations



BIM

Current Capability & Training

All projects in Oxford Architects are currently operating at BIM Level 1 status with electronic exchange of data. We are actively working towards BIM Level 2 accreditation on the strength of our BIM experience on a number of significant projects.

Several projects are operating at BIM Level 2 with cloud based collaboration on federated models. Recognising the benefits offered by BIM software other projects have been undertaken utilising Revit for the architectural models, often coordinating with similar models from other members of the design team.

Our models use rich data, linking specific attributes to objects and assemblies to the Level of Detail identified in the Employer's Information Requirements (EIRs). This enables us to provide automatic scheduling and links to specifications and manufacturer's data from the 3D model.

We have been operating an in-house BIM training programme since August 2013. Our third party BIM consultants 'AIS' have enhanced our embedded BIM and Revit knowledge with additional in-depth training sessions.

CAD Software

Oxford Architects operate Autodesk Revit and Bentley AECOSim Building Designer, both supported by Bentley PowerDraft and Autodesk Autocad for 2D drafting.

We use Solibri Model Checker software as a tool to examine and comment on federated BIM models. We can also run AECOSim 'Navigator' and Viewer, Autodesk 'Navisworks' and Autodesk 'Design Review' as required by the client. Visualisations are exported to Lumion for photorealistic renders, with additional Photoshop manipulation setting the models into context.

PAS 1192, EIR and BEP

We work to the standards set out in PAS 1192, AEC Protocols, CIC BIM Protocols, BS 1192 and BS 8541 and our Digital Production Standards manual has been developed to adopt these standards.



1. Fairfield Residential Care Home, Oxford 2. LSU Littlemore, Oxford Health

The Practice



Residential - D House, Bristol



Education - St Anne's College, Oxford



Science & Technology - Building R105,106 Equipment Assembly and Testing, Rutherford Appleton Laboratory



Education - University of Bristol, Innovation Centre



Community - Thame Library, Oxfordshire



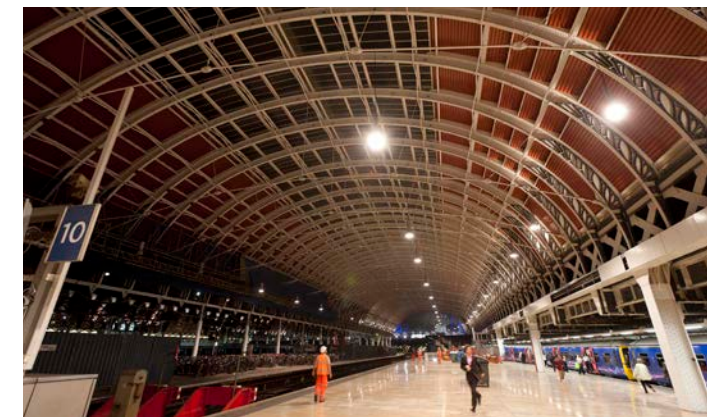
Science & Technology - The Tintometer Ltd, Amesbury Wiltshire



Residential - Newfoundland Road, Bristol



Commercial - Great George Street, Bristol



Transport - Spans 1,2,3 & 4 Paddington Station, London



OXFORD

Bagley Croft
Hinksey Hill
Oxford UK
OX1 5BS
Tel: 01865 329 100

BRISTOL

The Workshop
254 Southmead Road
Bristol UK
BS10 5EN
Tel: 0117 958 1500

mbalaam@oxford-architects.com

www.oxford-architects.com