



Schools Profile



Introduction

As a successful practice that has operated for over 50 years, Oxford Architects has a distinguished record in producing quality education buildings from conception to occupation, encompassing new buildings, refurbishments and renovation projects. From our wealth of experience we understand the challenges and opportunities presented when designing and constructing buildings in the education sector.

The Practice provides the complete range of architectural services undertaking projects from brief formulation and the earliest stages of masterplanning through to design development, visualisation and production information to enable the competitive procurement of buildings and infrastructure.

The diverse nature of commissions we undertake includes projects for the education, research, healthcare, transport, commercial, community, industrial, and residential sectors which enables us to transfer skills and knowledge from one sector to another.



Methodology - How We Work

We are a very approachable practice and proud of our settled, repeat client base won through excellent customer service and our ability to deliver projects. Part of our success is down to building good client relationships through meeting, listening and understanding requirements and needs. Added value comes from bringing knowledge and experience from other sectors to provide solutions that may not have been otherwise considered.

We recognise that our clients generally know their businesses better than we do and often have an understanding of what solution would work best for them. We therefore approach all projects as a partnership and through discussion and dialogue with all parties develop a response that fulfils their requirements.



1. Stowe School, Music School 2. Alfriston School, Performance Arts Building, Competition 3. Wheatley Park School, English & Media Studies Building

4. Manor Green School, Maidenhead 5. St Hugh's School, Dovecote Library 6. School of St Helen & St Katharine, Sports Hall



1.

Flexible Design

Oxford Architects are a well-resourced Practice with a high Partner/ Associate to staff ratio delivering excellent customer care, professional competence, commitment and delivery. We have a stable and loyal workforce of some 45 people in offices in Oxford and Bristol with the professionalism and experience to deliver the required service for any project.

Additionally, we can also provide Party Wall, Principal Designer and Graphics Designer services in-house.

We operate a Partner/Project Architect-led approach to design and project running. The Partner and Project Architect will stay with the project from appointment through to completion and post project evaluation. As the project programme requires, they will be supplemented by our technical department and graphics support. We review programmes on a weekly basis to ensure that projects are properly resourced and managed.

Technical delivery is assisted by our ISO 9001 Quality Management, and ISO 14001 Environmental Management accredited systems.

We operate a wide range of computer software and are proficient in BIM Level 2.

Sustainability is at the heart of our design process. All projects are cross referenced with our sustainability check list. Senior Designer Anna Wareham is a Certified Passivhaus Designer and we have an extensive portfolio of completed BREEAM Excellent and Very Good projects.



2.



3.

Schools Experience

Oxford Architects brings considerable in-depth knowledge, experience and expertise to all aspects of school building design through the collective resources of the organisation and through the professional skills of individual staff.

Our experience includes special needs schools and ranges from Nursery and Primary school provision through to Secondary and Sixth Form facilities. Encompassing both refurbishment and new school building provision we are well versed in delivering education buildings using traditional and more innovative forms of procurement.

At the strategic level we undertake site masterplanning and provide site-wide development control plans for schools. At the implementation level, our recent design and delivery experience covers the full spectrum of school buildings and facilities, from the smallest refurbishment to large multi-million pound developments, which include:

- Classrooms
- Laboratories
- Food Technology
- Performing Arts & Drama
- Sports Halls & Facilities
- Common Rooms
- Learning Resource Centres
- IT Suites
- Dining Halls & Kitchens



1. School of St Helen & St Katharine, Sports Hall 2. School of St Helen & St Katharine, Gym 3. St Hugh's School, Music Department

4. John 'O' Gaunt School, Hungerford, Library & Café 5. St Hugh's School, Sports Hall & Swimming Pool 6. Stowe School, Music School 7. Yew Wah International Education Foundation, Bridgwater, Somerset

Recent Projects

St Hugh's School, Carswell - Music department (£350k)

Library in Grade II listed dove cote (£400k)

New craft and design technology building (£1.0m)

Sports hall & swimming pool (£3.0m)

London Borough of Southwark - New primary free school (£3.0m)

School of St Helen & St Katharine, Abingdon - New sports centre (£2.2m), Bursary refurbishment & extension (£150k)

Estates office extension (£150k)

Church Cowley St James CE Primary School, Oxford - New all weather sports area (£100k), New classroom extension (£500k)

Summer Fields School, Oxford - Refurbishment of an existing building & new extension to form a pre-preparatory school (£1.8m)

Stowe School, Buckinghamshire - New music school & performance hall in the grounds of a Grade I Listed building set within a World Heritage Site (£4m)

Cothill School, Abingdon - New two storey dormitory accommodation for 48 boys including house parents accommodation (£2.0m), Extension and refurbishment of an existing cottage to provide new Bursary Office accommodation (£250k)

St Francis CE Primary School, Oxford - New school entrance and reception (£250k)

Yew Wah International Education Foundation, Bridgwater - Conversion of 1807 Manor House into 40 - 150 pupil boarding school (£3.0m)

Kitebrook School - New school hall (£750k)



1. St Hugh's School, Music Department 2. John Keats Primary School, Southwark, London 3. Yew Wah International Education Foundation, Bridgwater
4. St Hugh's School, Dovecote Library

5. Stowe School, Music School 6, 7. Summer Fields Pre-preparatory School, Oxford 8. Stowe School, Music School, Performance Hall

Experience

Oxfordshire County Council Framework

St Nicholas Primary School, Oxford - Classroom extensions in 2 phases (£1.1m)

Rose Hill Primary School, Oxford - New school feasibility study (£7.0m)

Wheatley Park School - English and Media Studies building (£2.50m)

Wheatley Park School - Proposed performance hall (£2.50m)

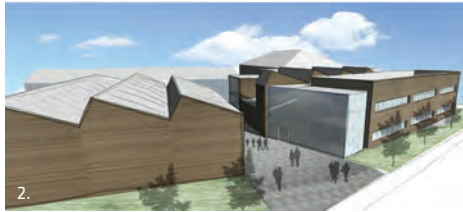
Carterton Community College - New hall (£660k)

Lord Williams School, Thame - Masterplan (£25m)

Frank Wise School, Banbury - Feasibility study for new facilities in a special school (£4m)

2 competitions - For new Primary Schools, Oxford (£7m and £11m)

Lord Williams's School, Thame - Drama hall (£650k)



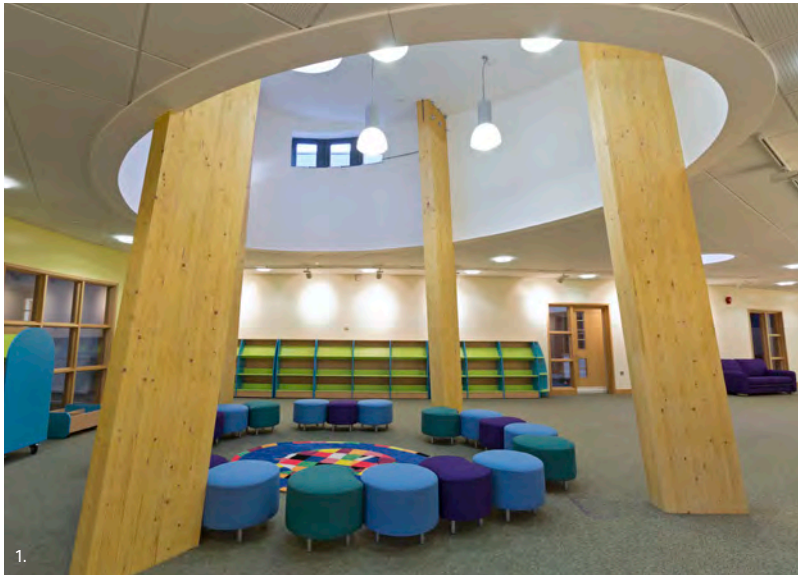
1. Wheatley Park School, English & Media Studies Building 2, 3. Downs School 4. Wheatley Park School, English & Media Studies Building

5. Carterton Community College, Sixth Form 6. Florence Park Children's Centre, Oxford 7. St Nicholas primary School, Oxford

Experience

Worcestershire County Council Framework

- Regency Special School, Worcester** - Extensions, pool and hall (£5.1m)
- Bengeworth Primary School, Evesham** - New primary school (£5.5m)
- St Anne’s Primary School, Kidderminster** - Surestart centre and class base extensions (£1.2m)
- St Mary’s Primary School, Bewdley** - Refurbishment and extensions (£1.6m)
- Pershore High School** - Science laboratories (£2.5m)
- Pershore High School** - SEN/LRC/entrance building and food technology building (£1.45m)
- Pershore High School** - Dining hall infill (£200k)
- Bewdley High School** - CDT/food technology building (£1.95m)
- Bewdley High School** - Art display space (£200k)



1.



2.



3.

Other Schools

- Manor Green School, Maidenhead** - 150 place special needs school (£17m)
- Willow Dene School, Greenwich** - Proposals for a 150 place special needs primary school (£18m)
- Cothill School, Cothill** - New classroom block (£800k)
- Chandlings, Abingdon** - 2 New classroom blocks (£800k each)
- Cheltenham Ladies College** - New art, design and technology building (£3m)
- The School of St Helen and St Katharine, Abingdon** - Masterplan including new science block (£12-15m), sports hall (£1.2m), kitchen upgrade (£500k), classroom block (£1.5m)



4.

Bracknell Forest Council Primary School Upgrades

- Technical Architect for:**
- Sandy Lane Primary School** - 2 new classrooms, extension to hall and ancillary spaces including fire strategy for whole school (£400k)
 - Holyspring Primary School** - 3 new classrooms, modular Nursery unit, internal alterations to link to existing hall area and ancillary spaces over two phases (£650k)
 - Crownwood Primary School** - Internal alterations to create new 3 class foundation unit for the school (£250k)
 - Owlesmore Primary School** - Internal alterations and alterations to create new classroom space (£70k)



5.



6.



OXFORD

Bagley Croft
Hinksey Hill
Oxford
OX1 5BS
Tel: 01865 329 100
Fax: 01865 326 822

BRISTOL

The Workshop
254 Southmead Road
Bristol
BS10 5EN
Tel: 0117 958 1500

www.oxford-architects.com